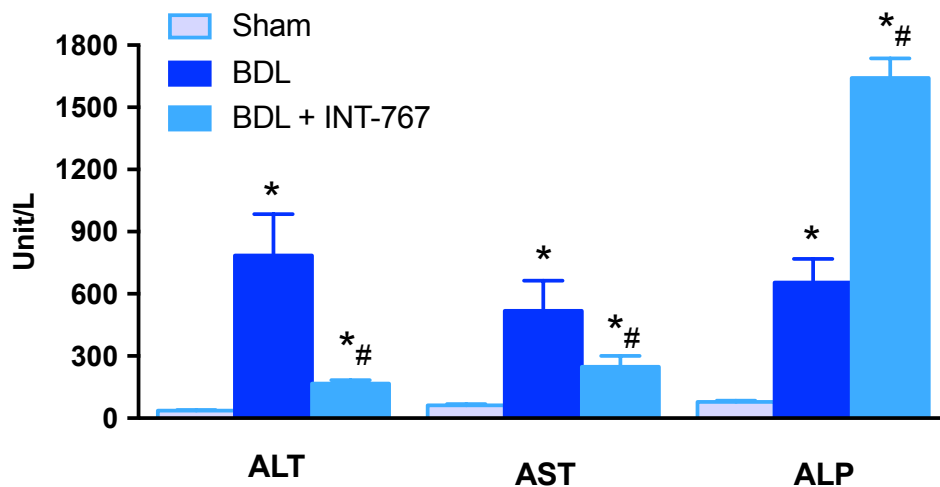


Bile Duct Ligation Model of Liver Fibrosis

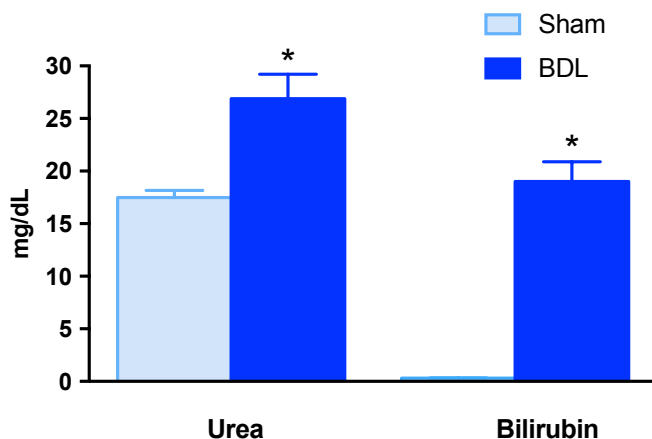
Model & Experimental Details

- Species: C57Bl/6 mice
- Model: Surgical Ligation of the Common Bile Duct
- Duration: 1 Week
- Endpoints: Serum, Tissue and Markers of Fibrosis and Damage

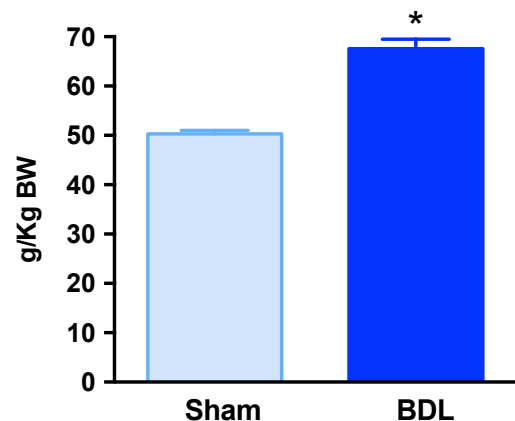
Liver Enzymes



Serum Urea and Bilirubin



Liver Weight



* $p < 0.05$ vs. Sham; # $p < 0.05$ vs. BDL