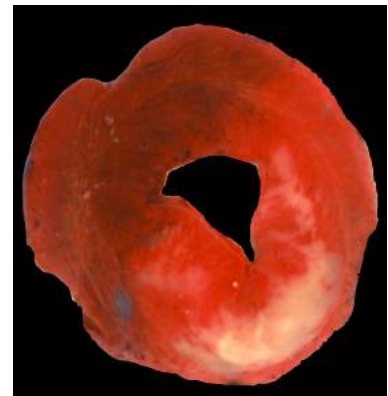


Rat Myocardial Ischemia/Reperfusion Model

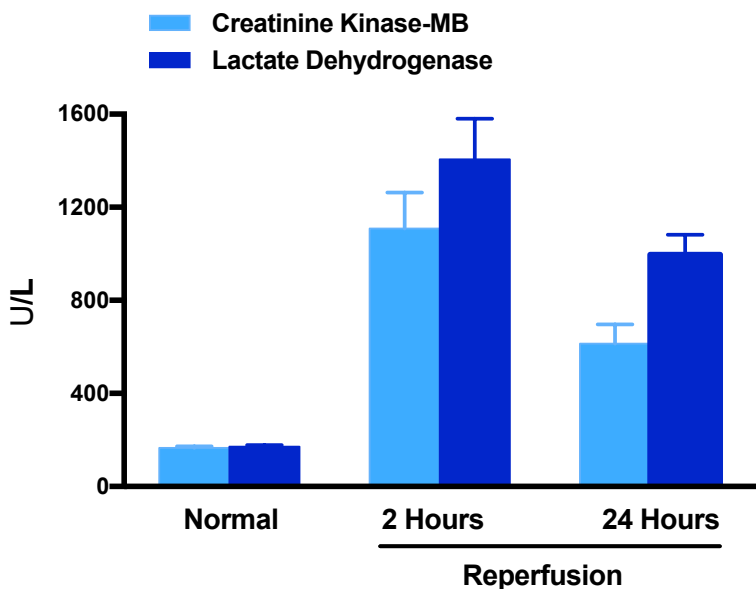
Model & Experimental Details

- Sprague-Dawley Rats
- Occlusion of the LAD Coronary Artery followed by Reperfusion (24 hours)
- Elevated Serum Creatinine Kinase and Lactate Dehydrogenase
- Evans Blue and TTC Staining: Left Ventricle, Area at Risk (AAR) and Infarct Size (IS)

Infarcted Heart Section



Serum Ischemia/Reperfusion Markers



Histological Evaluation

